

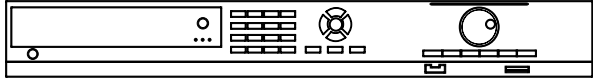




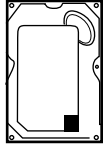
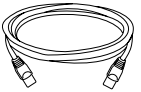


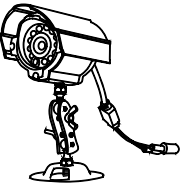
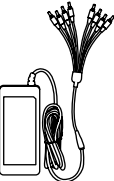

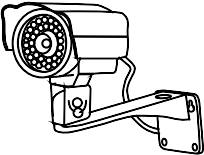

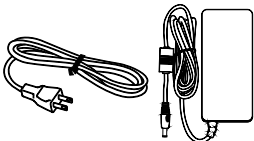


Quick Start Guide

DVR Setup 16 Channel DVR
Model: QSTD501616C

- 1** Connect
- 2** Setup
- 3** Enjoy

What's in the box? check that your package includes the following:

			
	DVR	Manual	USB Mouse
			
Remote Control	RCA-BNC x2	500 GB Hard Drive	Ethernet Cable
			
	QPSCDCA Power Supply x4	60 ft. Camera Cables with Audio x4	
			
Cameras x4 - QD28414 x4 - QD28414W	Power Supply & 8 Way Adapter for QD28414	60 ft. Camera Cables x12	
			
Cameras x4 - QSC48030	Cameras x4 - QPSCDCA	QSC48030 Power Supply x4	

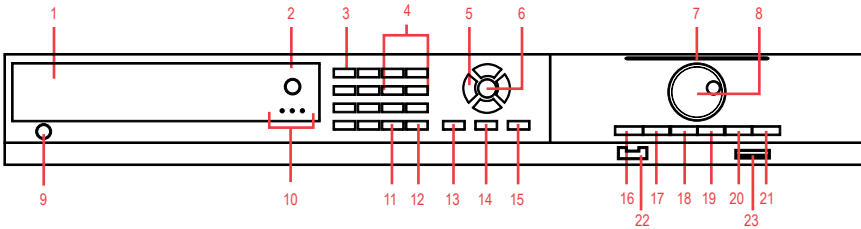


Digital Peripheral Solutions, Inc.
8015 East Crystal Drive,
Anaheim, CA 92807
www.Q-See.com

1 Connect

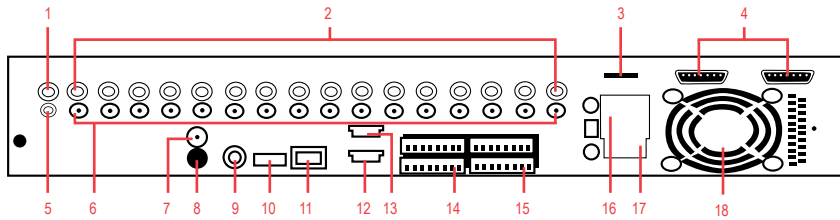
DVR and Cameras

FRONT VIEW



- | | | |
|-----------------------|----------------------|----------------------|
| 1 HEAT RELEASE VENT | 9 POWER | 17 SEARCH |
| 2 HDD LOCK | 10 HDD STATUS LIGHTS | 18 PLAY |
| 3 NUMBER BUTTONS | 11 INFO | 19 REWIND |
| 4 MULTI-SCREEN BUTTON | 12 AUTO/- | 20 FAST FORWARD |
| 5 DIRECTION | 13 P.T.Z. | 21 STOP |
| 6 ENTER BUTTON | 14 BACKUP | 22 IR RECEIVER |
| 7 INDICATOR LIGHTS | 15 MENU | 23 USB PORT (BACKUP) |
| 8 SHUTTLE | 16 REC | |

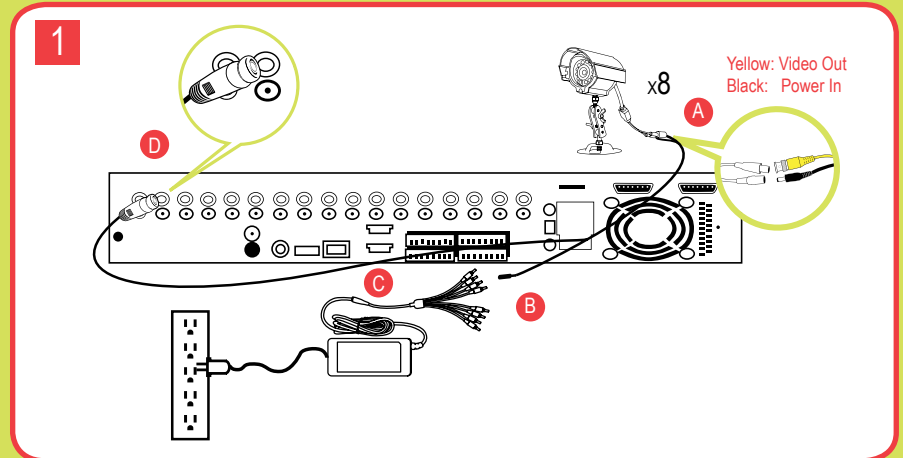
REAR VIEW



- | | | |
|----------------|--------------|-----------------|
| 1 VIDEO OUT | 8 S-VIDEO | 15 ALARM OUT |
| 2 VIDEO IN PUT | 9 PS/2 PORT | 16 POWER PORT |
| 3 eSATA PORT | 10 USB MOUSE | 17 POWER SWITCH |
| 4 LOOP OUT | 11 RJ45 PORT | 18 FAN |
| 5 SPOT OUT | 12 VGA PORT | |
| 6 AUDIO IN | 13 COM PORT | |
| 7 AUDIO OUT | 14 ALARM IN | |

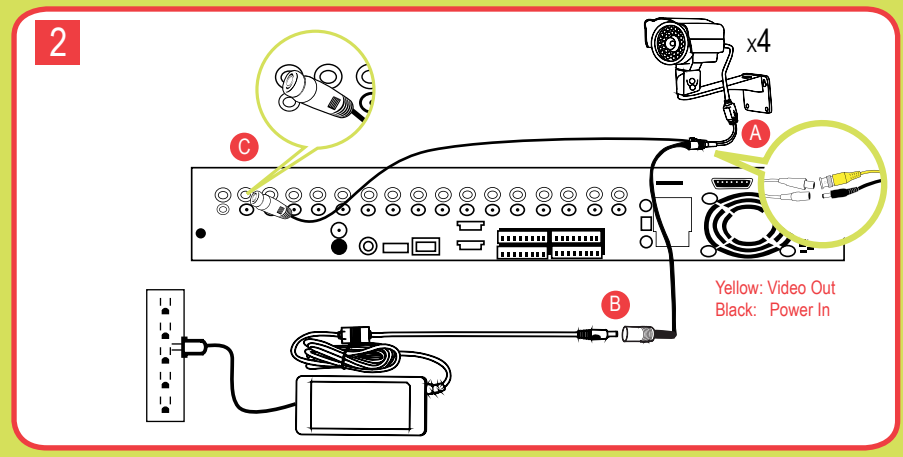
1 CONNECTING CAMERAS: QD28414W & QD28414

- A Connect the 60 ft. extension cable to the camera
 - B Connect the female power end of the cable to the splitter
 - C Connect the 8 way splitter to the AC adapter
 - D Connect the video end to the video port on the DVR
- Repeat the same process for cameras 2 through 8



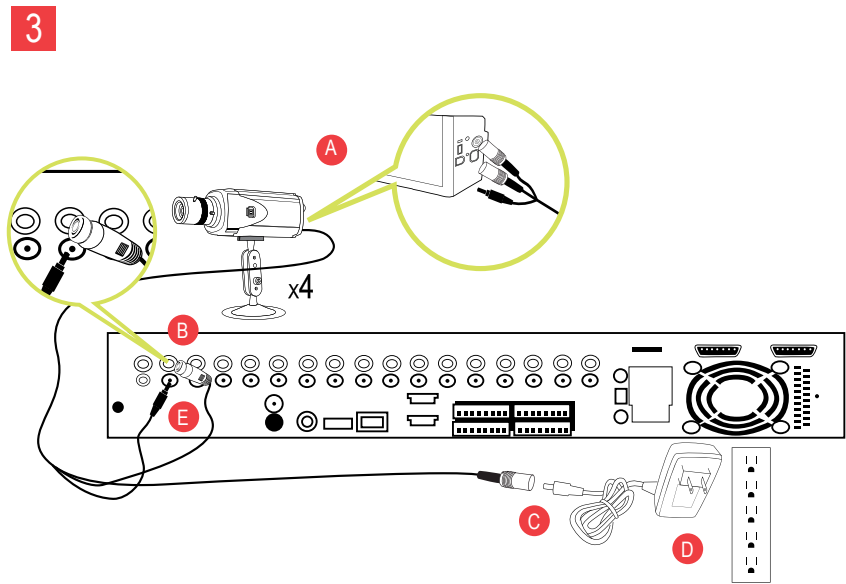
2 CONNECTING CAMERAS: QSC48030

- A Connect the video and power connectors to the camera
 - B Connect the power connector on the other end of the cable to the power supply
 - C Connect the video connector on the other end of the cable to the Video In on the DVR
- Repeat the same process for cameras 2 through 4



3 CONNECTING CAMERAS: QPSCDCA

- A Connect the video and power connectors from the cable to the camera
 - B Connect the other video connector on the other end to the Video In port on the DVR
 - C Connect the power connector on the other end of the cable to the power adapter
 - D Attach the power adapter to a power source
- NOTE:** To record sound from the camera attach the audio connector to the camera
- E Attach the audio connector on the other end of the cable to an Audio In port on the DVR
- Repeat the same process for cameras 2 through 4



CAUTION: Use only the power adapters supplied with the Q-See unit. We recommend Plugging the DVR and Cameras into a Transient Voltage Surge Protector (UL-449 Rating)* 330 or lower clamping voltage, Joule rating 400.

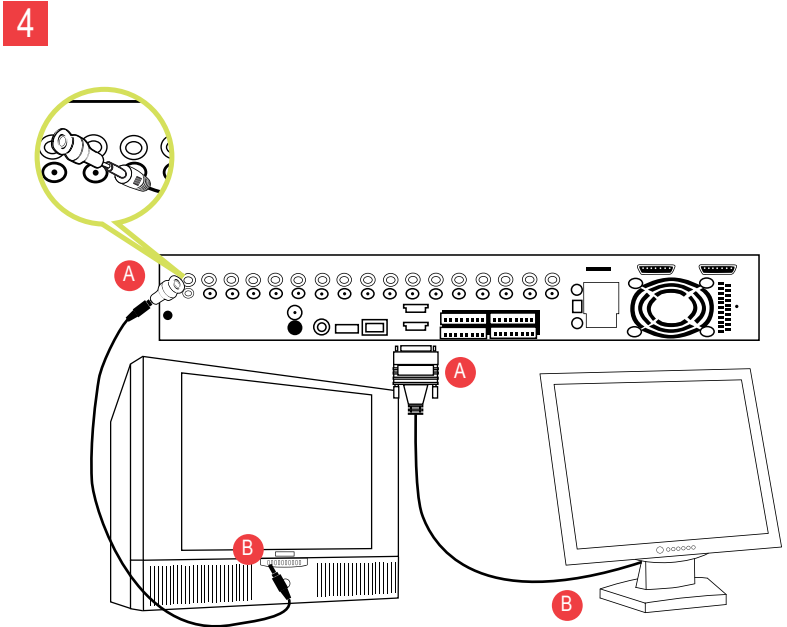
4 CONNECTING TO A TV OR VGA MONITOR

Connect to a TV:

- A Plug the BNC to RCA adapter to the Video Out port on the DVR and then connect a RCA cable (not included) to the adapter
- B Connect the other end of the RCA cable to the Video Input on the TV

Connect to a VGA monitor:

- A Plug in the VGA cable (not included) to the VGA port on the DVR
- B Connect the other end of the VGA cable to the Monitor



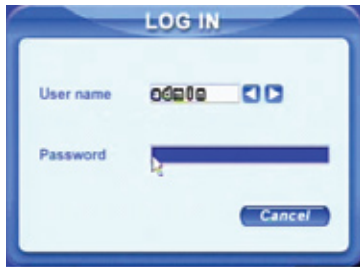
2 Setup

To navigate through the DVR menu, three options are available:

1. DVR Front Panel: Use the DIRECTION keys to move the cursor and the ENTER key to select
2. Remote Control
3. USB Mouse (included)

A Accessing the DVR menus

A1



Press the MENU key on the DVR front panel, which will display the LOGIN SCREEN (A1). Enter the default user name: admin, and password: 123456. This will display the SYSTEM SCREEN (A2). Use the direction keys to move the cursor and the ENTER key to select.

A2



The system screen offers the following setup features:

BASIC option: set time, date, enable audio and password check.

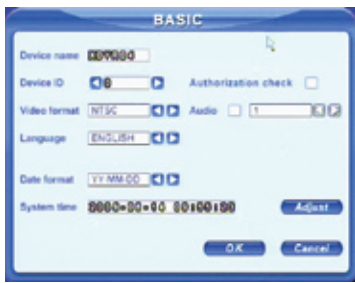
LIVE option: adjust the camera images
RECORD option: (B2) to set up resolution, frame rate, video quality and enable cameras for recording.

PTZ option: setup Pan-Tilt-Zoom cameras

USER option: setup users on the system
NETWORK option: setup remote access information, update firmware, and restore system defaults.

TOOLS option: to access hard drive information, update firmware, and restore system defaults.

Refer to Chapter 3 of the user's manual for more information on the SYSTEM menu.



B Setting up the DVR to Record: This system offers four modes for recording:

- 1) Manual, 2) Schedule, 3) Motion Detection, and 4) External Sensor.

For setup of external sensor alarms refer to sections 2.3.2 and 3.3.5 of the user's manual.

B1



B2



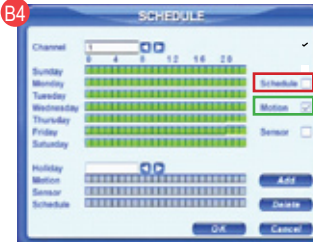
Manual Recording:

Setup and enable the cameras you want to record by going to the System Menu and selecting the RECORD option (B1, Red Box) this will display the Record Screen (B2). Put check marks in the cameras you want to record, and set the quality and frame rate you prefer for each camera. Push the RECORD button on DVR to start recording. Push the stop button to stop recording.

B3



B4



Time Schedule Recording:

Go to the System Menu and select the SCHEDULE option (B3, Red Box). The SCHEDULE screen (B4) will appear. Put a check mark in the Schedule box (B4, Red Box). Select or de-select the Days and Hours you want the cameras to record. The Green area shows the hours that are enabled to record, and the transparent area shows the hours which are not enabled to record. Select OK to save the settings. Repeat this feature for all cameras.

Motion Detection Recording:

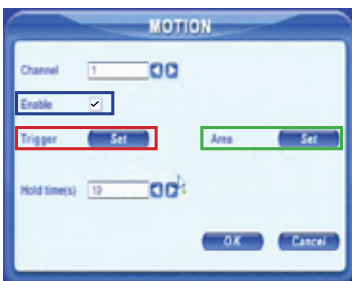
You must first setup the days and times for recording on motion detection, by going to the System Menu and selecting the SCHEDULE option (B3, Red Box). The Green area shows the hours that are enabled to record, and the transparent area shows the hours which are not enabled to record. Select the hours you wish to record. Put a check mark in the Motion Box (B4, Green Box).

B5



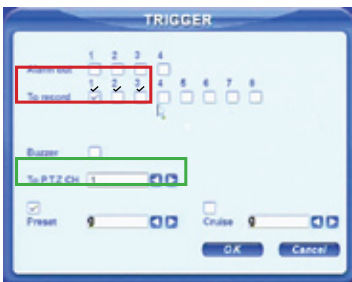
Display the SYSTEM screen (B5) and select the MOTION option (GREEN box).

B6



Push ENTER to put a check mark in the enable option (BLUE box), and select the SET button (RED box) in the Trigger options to display (B7).

B7



Select the cameras you wish to record when motion is detected on CH 1 (CH 1=Camera 1). You also have the option to record on any PTZ cameras on the system if motion is detected on this channel. In (B7), we've selected cameras 1, 2, and 3 to record if motion is detected on CH 1, including the PTZ camera which we have set on CH 3. Select OK to save the settings and select the Area Set option (B6 GREEN box) to display (B8).

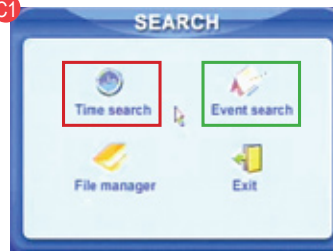
B8



Use the Direction keys and ENTER key to select the areas of the camera screen to detect motion. Blue areas will detect motion and Red areas will not trigger recording. Select ALL in the upper right corner to make the entire screen motion sensitive. Next choose the sensitivity level. (Sensitivity Level 1 = least sensitive and Sensitivity Level 8 = most sensitive.) Select the Save option to save the settings. Repeat steps B6 through B8 for channels 2-16.

C Setting up the DVR to Playback Files

C1



C2



Press the SEARCH key on the DVR, enter User Id and Password if the system is password protected. The SEARCH option will display (C1). Select Time Search (C1 RED box) and press the ENTER key.

C3



C4

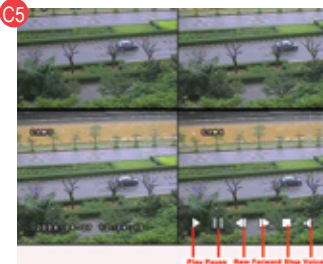


The Time Calendar (C2) will display (the highlighted dates are the files available to play). Select the dates you wish to view, and push ENTER. The Time Search menu (C3) will appear.

Select the channels (cameras) to search, and the display mode you wish to view. Then select the files on the timeline. Hit play which will display the file player (C5).

TO SEARCH BY EVENT: Follow (C1) to select Event search (C1 GREEN box), (C4) will display. Click the Date icon to select the date, and the available files to playback will display in the box on the bottom of the screen. Select a file and push ENTER. The File Player (C5) will open and play the selected recording.

C5

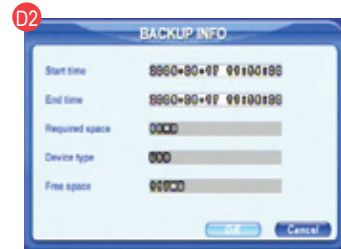
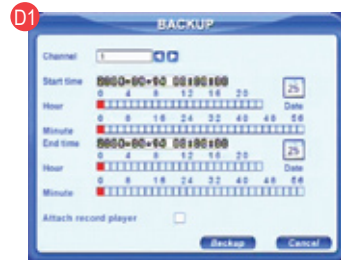


NOTE: Recording will not be interrupted while you are in Playback mode.

D Setting up the DVR to Backup Files

NOTE: If you stop recording while backing up the files, the backup will go faster.

Insert a USB flash drive into the USB port located on the front of the DVR. Press the BACKUP button and enter the User Id and Password if the system is password protected. This will display the BACKUP screen shown in (D1). Select the Date icon and push ENTER. Select the date of files to backup. The days with files will be highlighted. Select the START TIME and END TIME and push the BACKUP button. This will display the BACKUP INFO screen (D2). This screen will show the START and END time, the device, the space required, and how much space is available. Select OK, and the backup will start. A progress bar will display (D3). Once the backup is complete, a dialog box will display.



3 Enjoy



CONGRATULATIONS

on your purchase!

This Q-See product has undergone extensive quality control. If you have any issues during the setup process, please contact our support department before returning the product.

We have your solution!

- 1) Need assistance setting up the remote monitoring feature with your Q-See DVR? Visit www.portforward.com/qsee
- 2) Visit our Q-See Support Section at www.Q-See.com for instant troubleshooting tips, FAQs, DVR firmware downloads, Live Chat and More.
- 3) Contact our Support Team:



On the Web: (24/7) Visit the Technical Support Section
www.Q-See.com



By Phone (Monday thru Friday, 9am-5pm (PST))
Tech Support 1 (877) 998 3440, ext 539
Customer Service 1 (877) 998 3440 ext. 538



By Email:
ts@dpsi-usa.com